

Plan W2006GA: Extraordinary Split Foyer Design



House plans are Copyright © 2009 by our architects and designers.

- This extraordinary split-foyer home plan boasts far more than just a "pretty face". Careful attention to detail makes this economical 1,459 square foot design as functional as it is attractive.
- A covered stoop protects the inviting entry which is brightened by the glass door with sidelights and an arched transom. Vaults dramatize the family room, dining room, breakfast room, kitchen, and sunroom. A fireplace is the focal point of the family room.
- The spacious dining room is open to the family room and is adorned by a large "Palladian style" window. The efficient corridor kitchen includes a cabinet-style pantry. Adjoining the kitchen is the breakfast room and a sunroom, a feature seldom found in a home of this size. The sunroom provides access to one of the two decks, each measuring approximately 14' x 8'.
- On the opposite end are the bedrooms. Two comfortably sized secondary bedrooms each open near the shared bath. The master suite is truly luxurious. Among it's many amenities are a "double-step" tray ceiling, access to a private deck, a bath with double vanity, garden tub, shower, and toilet compartment, and a large walk-in closet.
- On the lower level along with the enormous 22' x 26' garage is a laundry room. Abundant space for growth is available with an optional 520 square foot studio which includes a kitchenette, bedroom and bath.
- Related Plan: Need less space? Save money with house plan 2068GA.

Style: Split Level

Total Living Area: 1459

Main Flr.: 1391

Lower Level: 68

Total Square Feet: 2,031 sq. ft.

Attached Garage: 2 Car, 572 sq. ft.

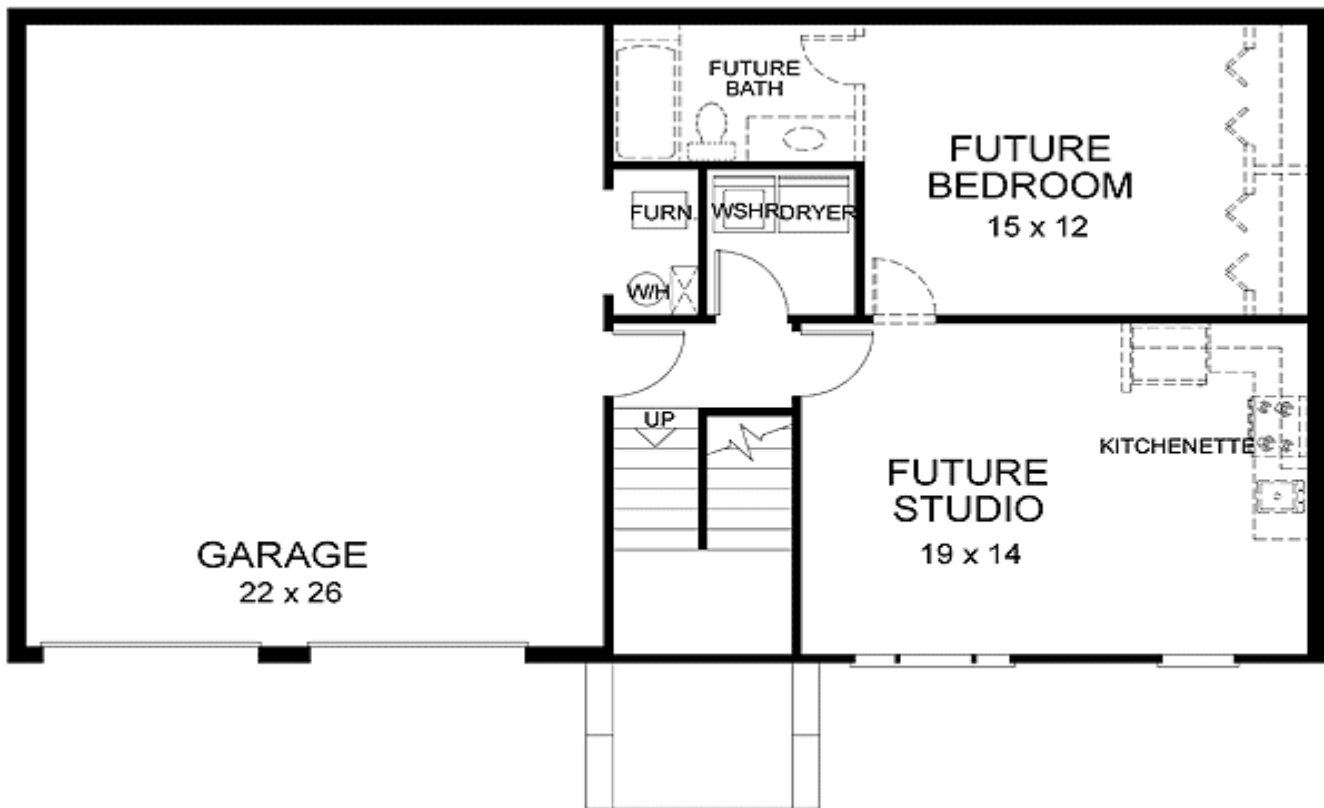
Bedrooms: 3

Full Bathrooms: 2

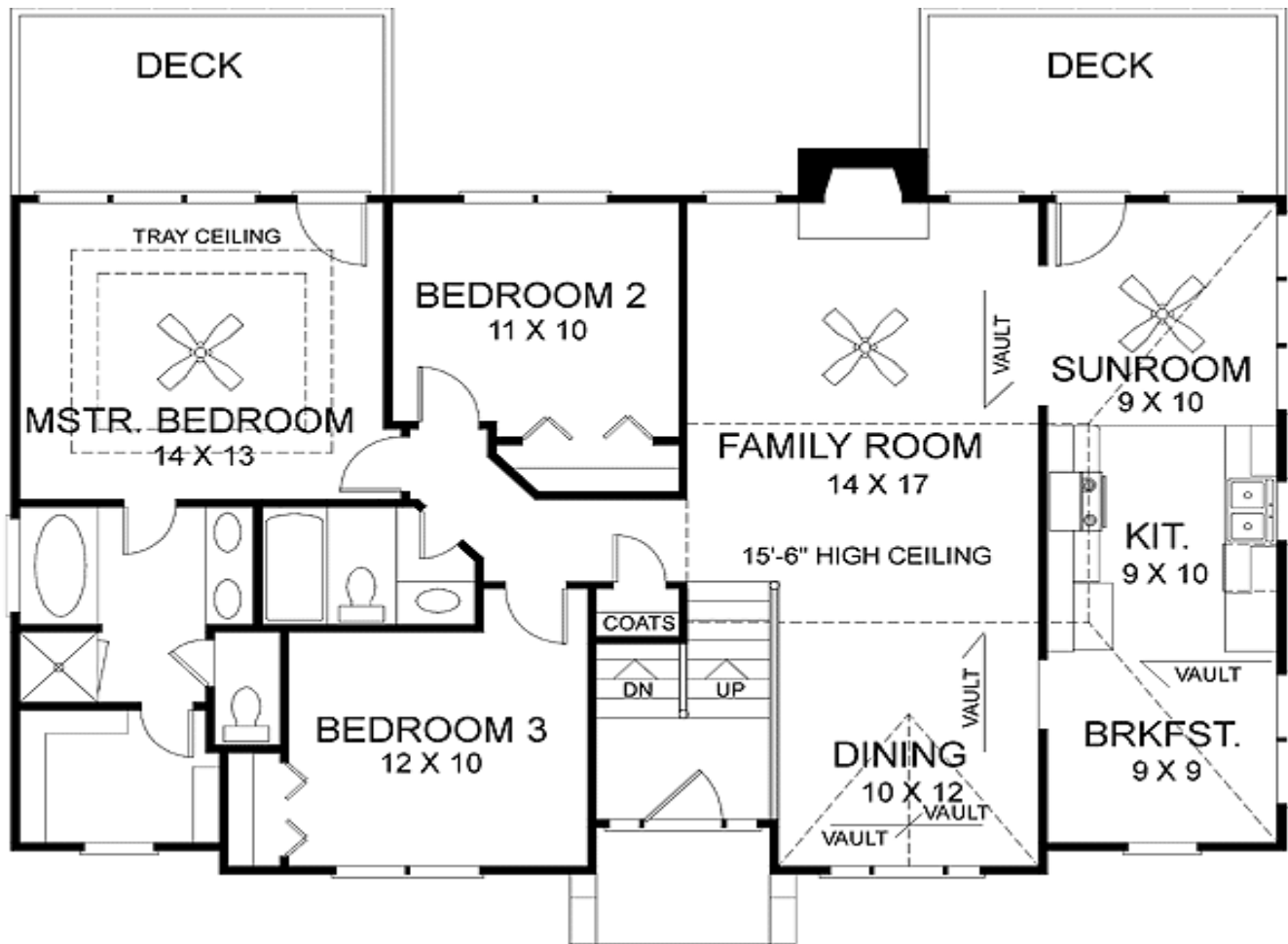
Width: 49'
Depth: 28'
Maximum Ridge Height: 29'
Exterior Walls: 2x4
Ceiling Height:
Main Floor: 8'
Standard Foundations: Slab
Alternate Foundations: Basement (\$150), Crawl (\$150)
Special Features: CAD Available, Narrow Lot, PDF

One Set	Five Sets	Eight Sets	Reproducible	PDF File	CAD
\$500	\$600	\$700	\$775	\$775	\$1,100

Main Level



2nd Level



Rear View

