

Architectural Designs ...selling quality house plans for over 30 years.

Plan W81019W: Classic Colonial



House plans are Copyright © 2009 by our architects and designers.

- For those who love tradition, this Colonial house plan will hold special appeal. A wide entrance hall with walk-in coat closet and powder room welcome you into the home plan.
- Warmed by a fireplace, the large living room opens to the formal dining room, creating a wonderful flow for entertaining.
- The kitchen shares space with a breakfast nook set in a bay.
- Another fireplace awaits you in the family room with beamed ceiling and a private study with built-in cabinets lies close by.
- The large master suite with two walk-in closets can be found on the second floor along with three family bedrooms and a hall bath.

Style: Colonial

Total Living Area: 2849

Main Flr.: 1505

2nd Flr.: 1344

Storage: 90 sq. ft.

Total Square Feet: 3,437 sq. ft.

Attached Garage: 2 Car, 498 sq. ft.

Bedrooms: 4

Full Bathrooms: 2

Half Bathrooms: 2

Width: 66'

Depth: 36'

Maximum Ridge Height: 28'

Exterior Walls: 2x4

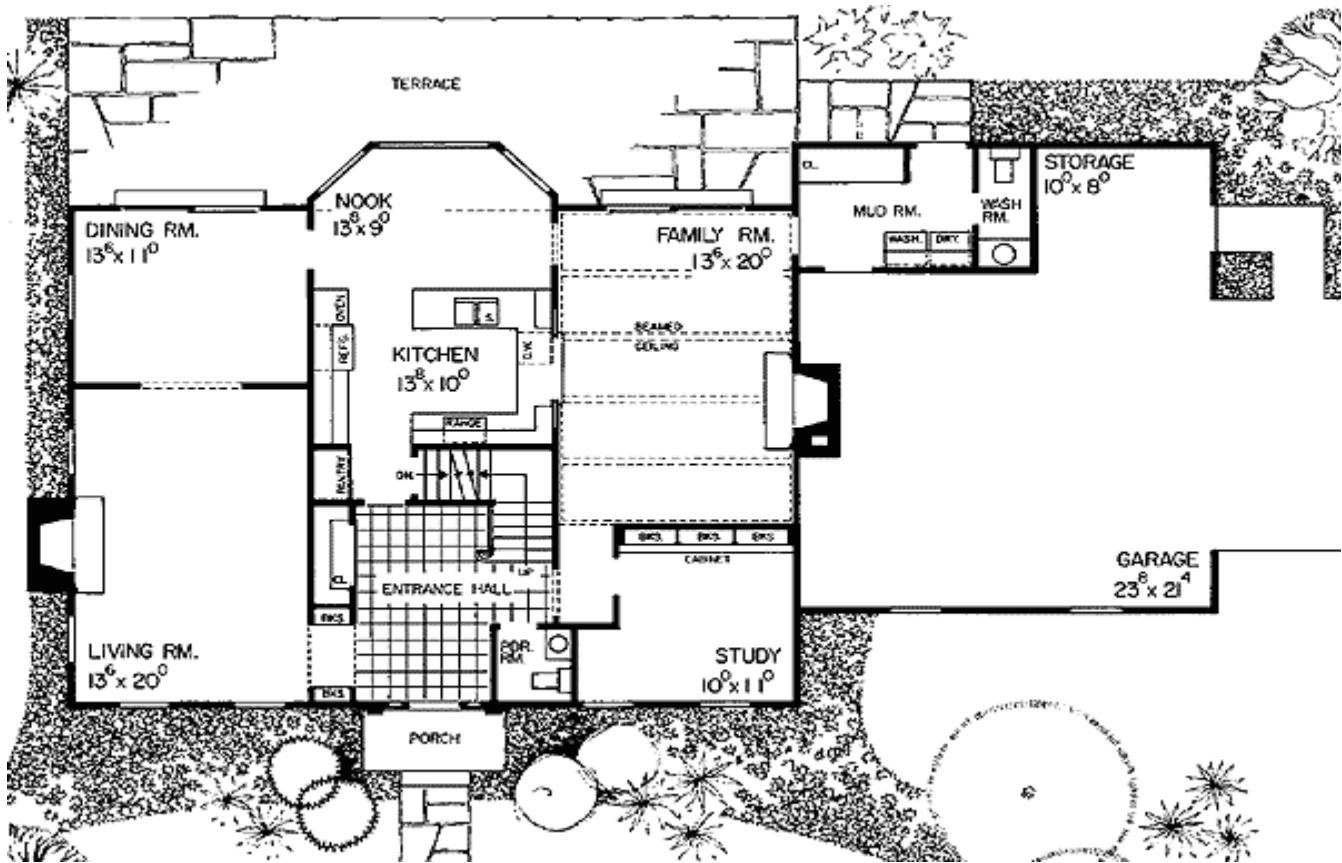
Ceiling Height:

Standard Foundations: Basement

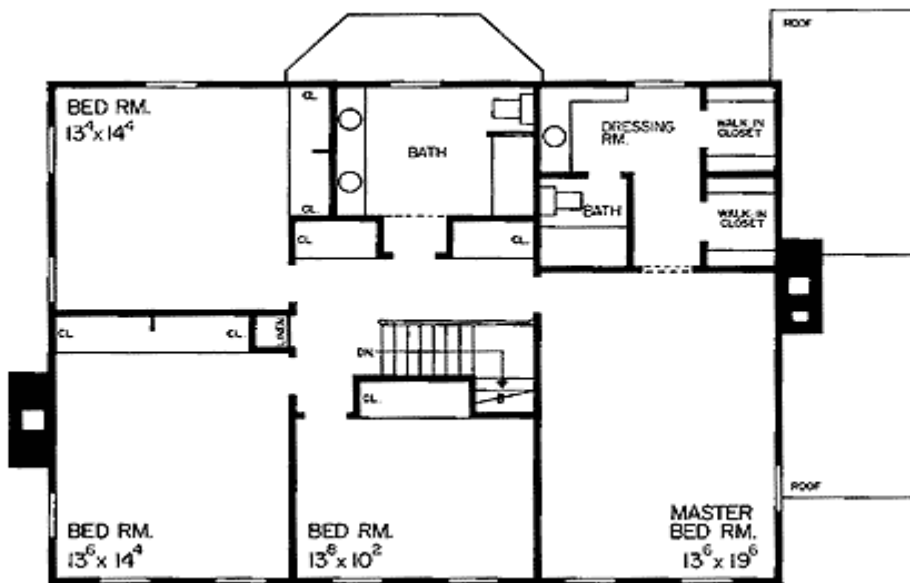
Special Features: PDF

One Set	Five Sets	Eight Sets	Reproducible	PDF File
\$665	\$740	\$810	\$1,000	\$1,000

Main Level



2nd Level



Rear View

