

Plan W40728DB: A Wall of Windows



House plans are Copyright © 2009 by our architects and designers.

- A large dormer, a gable over the garage and a covered front porch contribute to the cozy appearance of this two-story design. In back, four windows topped by transoms occupy an entire wall of the great room, providing a marvelous view to the rear.
- A see-through fireplace can be enjoyed from either the great room or the bayed breakfast nook, which also contains a built-in planning desk. A snack bar separates the breakfast area from the kitchen. Note the laundry sink in the nearby mudroom-laundry room.
- The entry foyer is open to a formal dining room with a box-bay window and space for a hutch.
- The master suite includes a walk-in closet and a bath with a corner whirlpool tub, separate shower and two sinks.
- Upstairs you'll find the hall bath and two bedrooms.
- NOTE: This house plan is designed for Structural Insulated Panel (SIP) construction. See plan 4086DB for the 2x4 version of this home plan.
- See these related house plans: 4052DB, 41726DB, 4020DB.

Style: Country, Traditional

Total Living Area: 1869

Main Flr.: 1421

2nd Flr.: 448

Bonus: 236 sq. ft.

Front Porch: 128 sq. ft.

Total Square Feet: 2,713 sq. ft.

Attached Garage: 2 Car, 480 sq. ft.

Bedrooms: 3

Full Bathrooms: 2

Half Bathrooms: 1

Width: 52'

Depth: 47'4"

Maximum Ridge Height: 25'

Exterior Walls: SIP

Optional Exterior Walls: 2x6 \$150

Ceiling Height:

Main Floor: 8'

2nd Floor: 8'

Other: 12'10" Great Room; 11'4" MBR

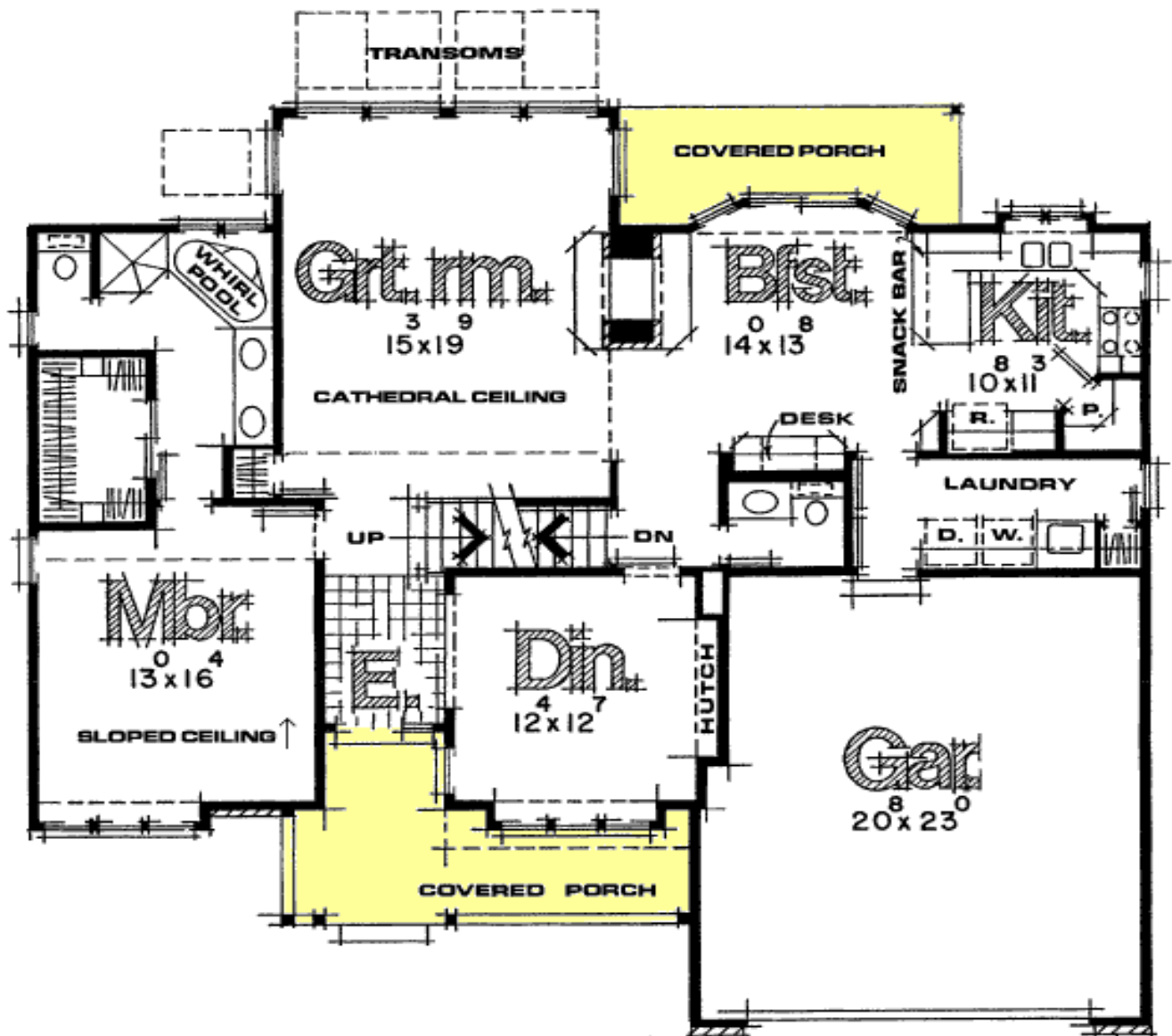
Standard Foundations: Basement

Alternate Foundations: Slab (\$150), Crawl (\$150)

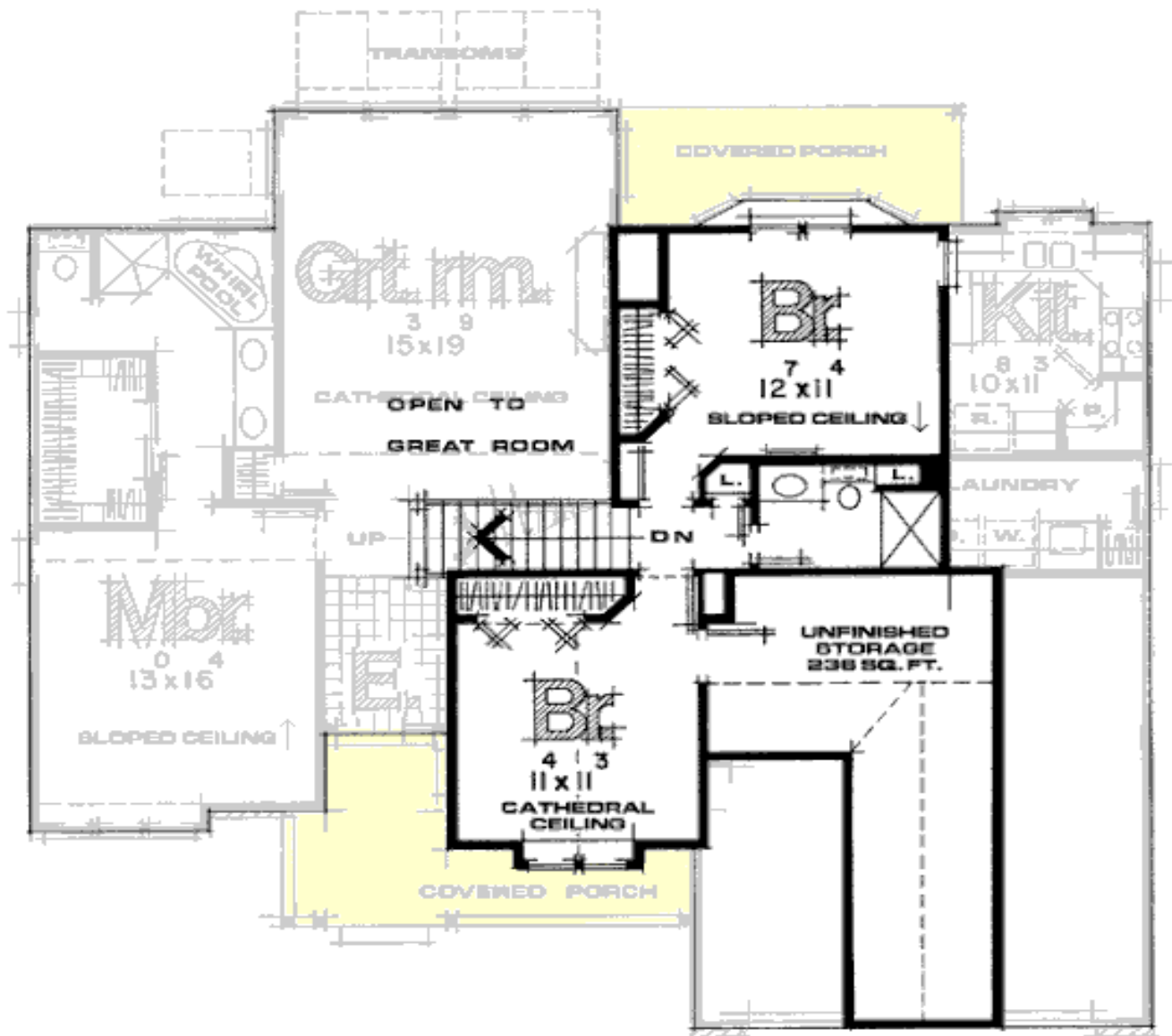
Special Features: PDF, Photo Gallery, Butler Walk-in Pantry, 1st Floor Master Suite, Bonus Room

One Set	Five Sets	Eight Sets	Reproducible	PDF File	CAD
\$615	\$765	\$825	\$765	\$765	\$1,065

## Main Level



## 2nd Level



# Architectural Designs ...selling quality house plans for over 30 years.

Photo



Rear View

