

Architectural Designs ...selling quality house plans for over 30 years.

Plan W15615GE: Master-Down Beauty



House plans are Copyright © 2009 by our architects and designers.

- A stunning combination of brick, stone creates a one-of-a-kind facade to this master-down house plan.
- A dramatic 2-story foyer greets you as you step in off the covered front terrace. A private study with fireplace and built-ins and a dining room with raised ceiling flank the entry.
- Across the gallery, you'll find the 2-story great room with coffered ceiling. Windows look out across the screened porch which is accessible by french doors. A fireplace is flanked by built-ins.
- The hearth room also features a coffered ceiling and a fireplace. It is open to the breakfast room and kitchen with large eat-at island. A walk-in pantry, laundry room and the garage are steps away.
- The master suite is luxurious and occupies the left side of the home. A discreet door accesses the covered porch. The master bath has an intricate raised ceiling, twin vanities, 2-headed shower and his-and-her walk-in closets.
- The upstairs offers three bedrooms (all with walk-ins) and three baths. There is room to expand and get an optional media room and an extra bedroom or upstairs study.

Style: European, Luxury

Total Living Area: 4395

Main Flr.: 3239

2nd Flr.: 1156

Bonus: 590 sq. ft.

Total Square Feet: 5,745 sq. ft.

Attached Garage: 3 Car, 760 sq. ft.

Bedrooms: 4

Full Bathrooms: 4

Half Bathrooms: 1

Width: 79'6"

Depth: 66'7"

Exterior Walls: 2x4

Ceiling Height:

Main Floor: 10'

2nd Floor: 9'

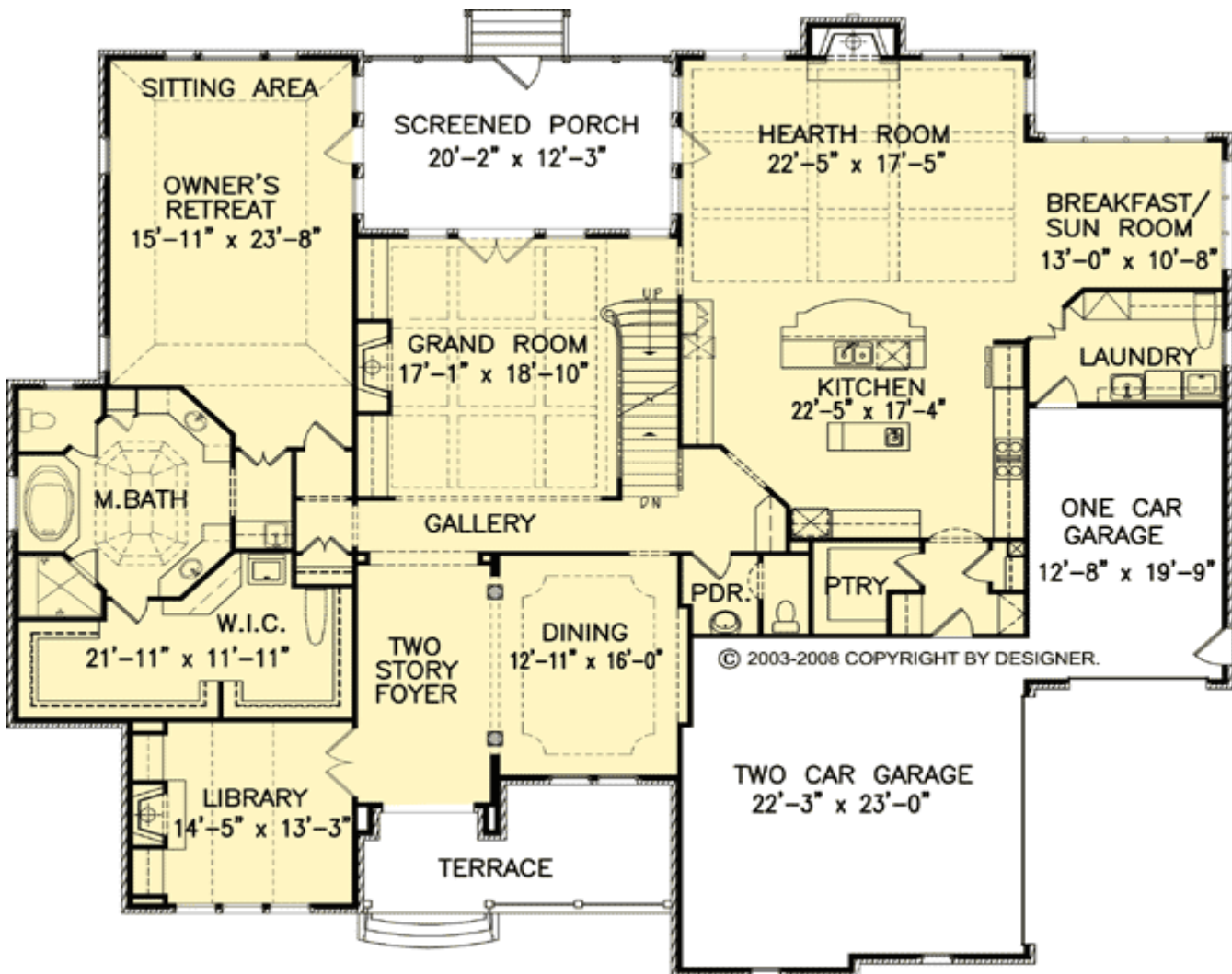
Other: 2-Story Foyer; 10'-11'10"" Coffered Grand; 8'10"" Tray Dining & MBR; 12' Vaulted Library; Vaulted Beamed Hearth Room; Tray MBR; Vaulted to 11'6"" BR#3 & BR#4

Standard Foundations: Basement, Crawl

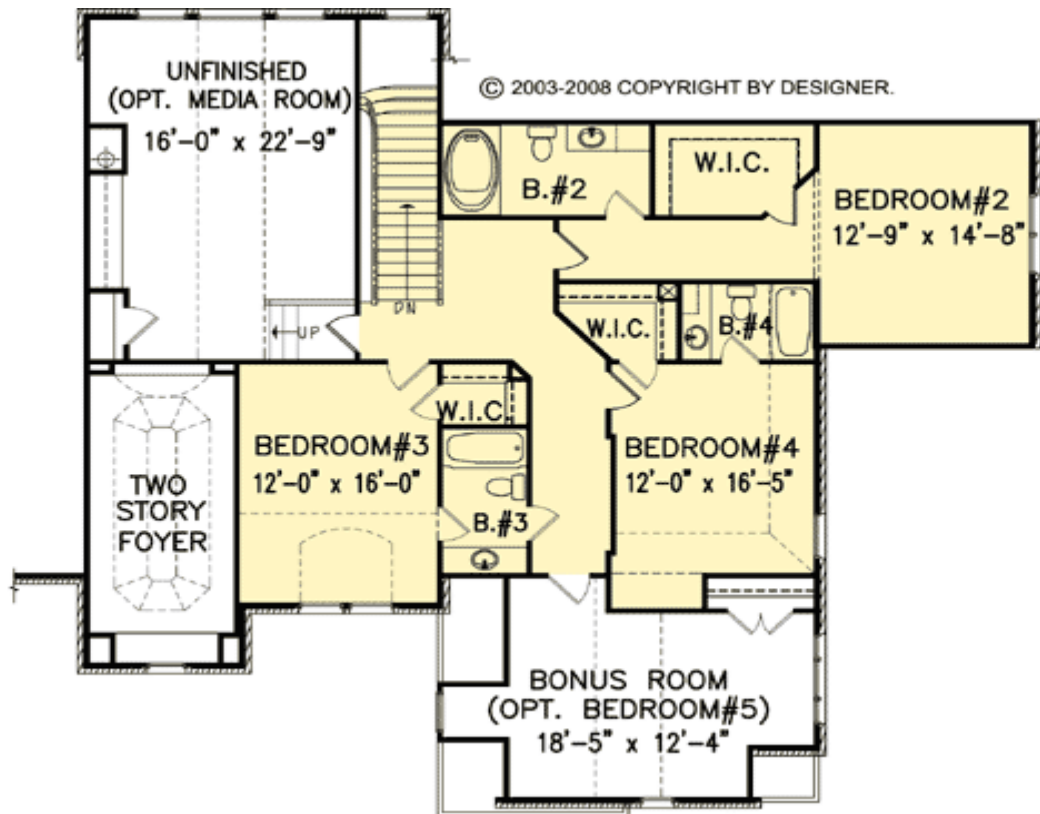
Special Features: Photo Gallery, Bonus Room, PDF, Jack & Jill Bath, MBR Sitting Area, 1st Floor Master Suite, Butler Walk-in Pantry, Sloping Lot, Corner Lot, CAD Available, Den-Office-Library-Study

Reproducible	PDF File	CAD
\$2,395	\$2,395	\$3,545

Main Level



2nd Level



Rear View

