

Plan W2227SL: Side-Entry Carriage House



House plans are Copyright © 2009 by our architects and designers.

- This carriage house plan offers an elegant yet traditional design.
- The 3-car side entry garage offers plenty of storage space.
- The upper level two bedroom, one bath apartment features generous room sizes.
- The kitchen features a pantry and conveniently serves the breakfast area.

Style: Carriage, Garage

Total Living Area: 568

2nd Flr.: 568

Total Square Feet: 1,452 sq. ft.

Attached Garage: 2 Car, 884 sq. ft.

Bedrooms: 1

Full Bathrooms: 1

Width: 34'

Depth: 30'

Maximum Ridge Height: 26'

Exterior Walls: 2x4

Optional Exterior Walls: 2x6 \$75

Ceiling Height:

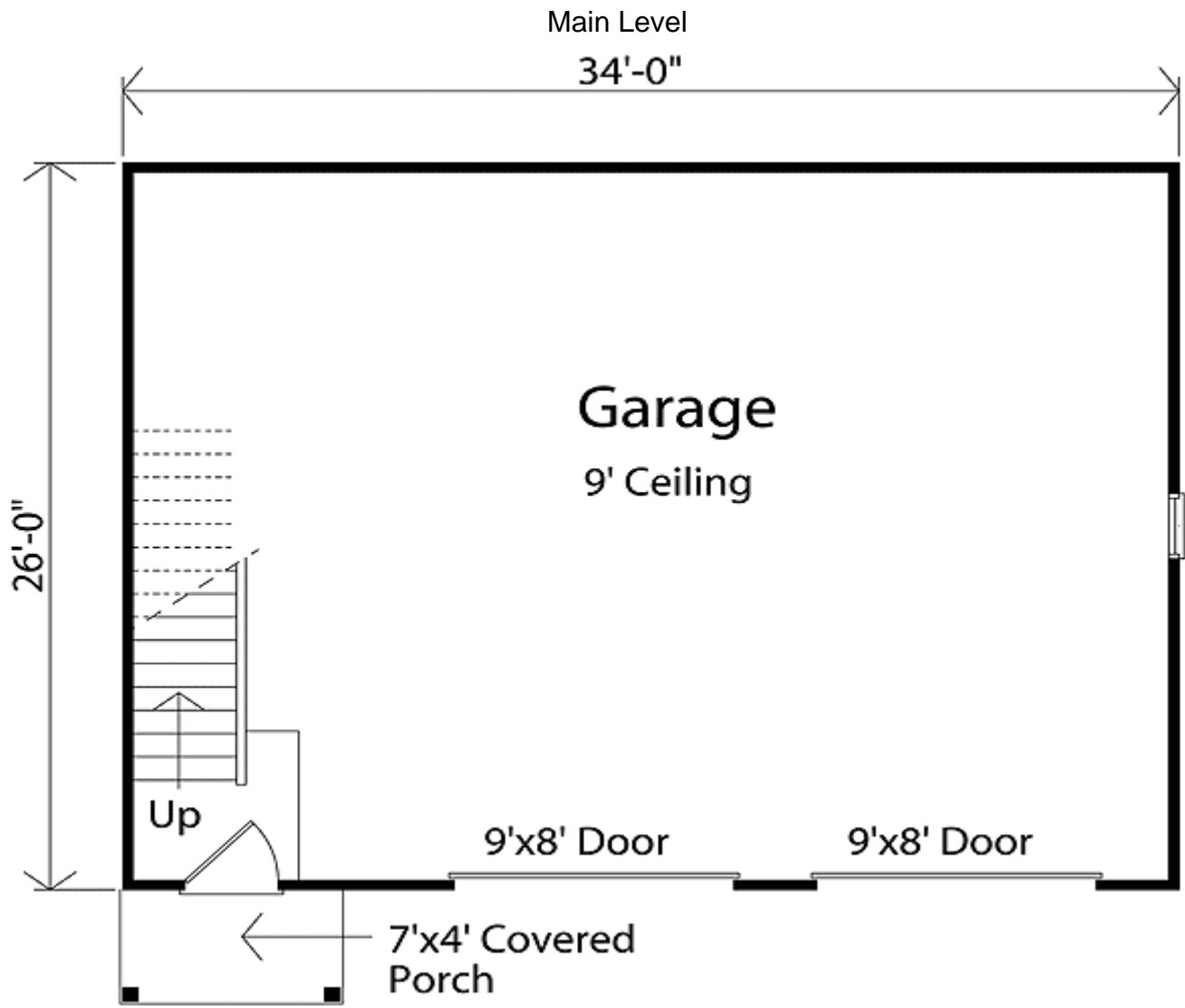
Main Floor: 9'

2nd Floor: 8'

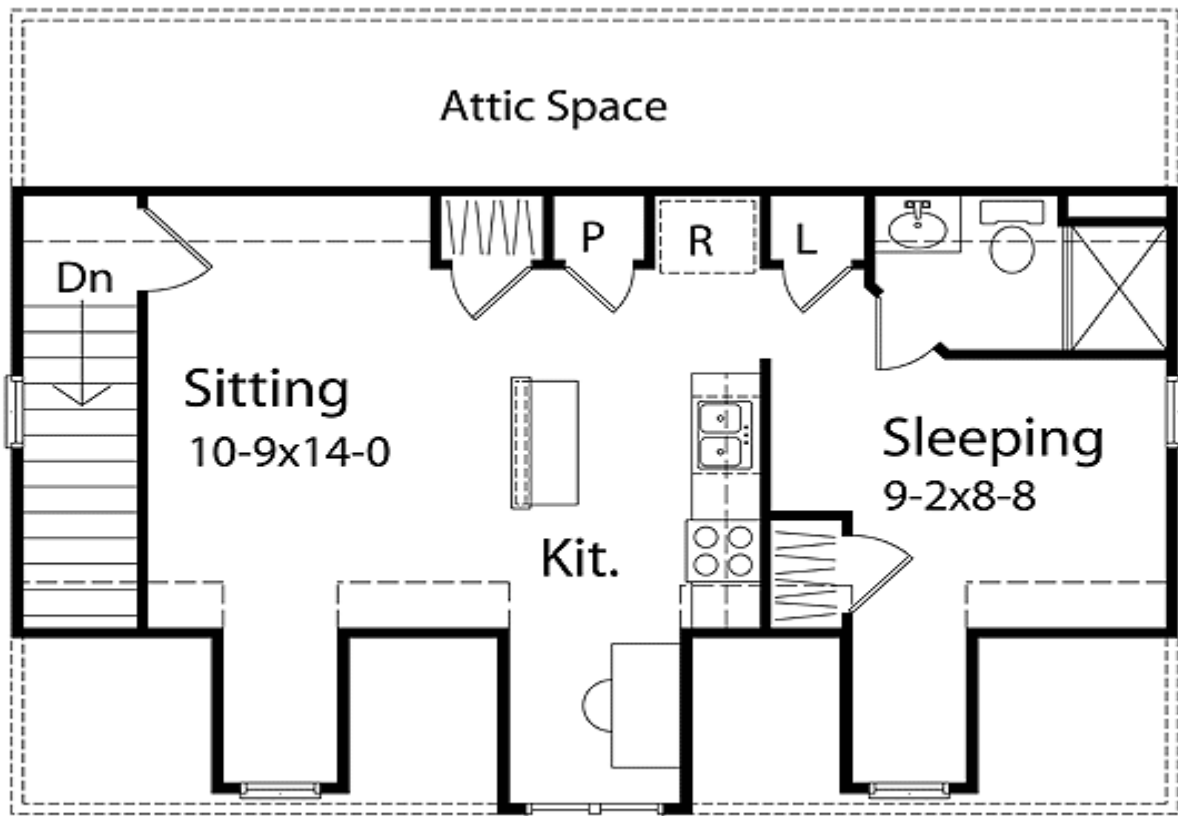
Standard Foundations: Slab

Special Features: PDF, CAD Available, Narrow Lot

One Set	Five Sets	Eight Sets	Reproducible	PDF File	CAD
\$250	\$340	\$385	\$450	\$450	\$550



2nd Level



568 Square Foot Efficiency Apartment

Sides/Rear

